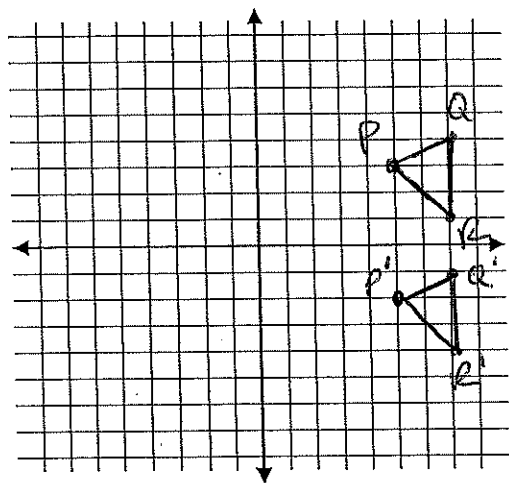


4. Graph and label the polygon determined by the coordinates below, then graph and label the image created by the transformation:

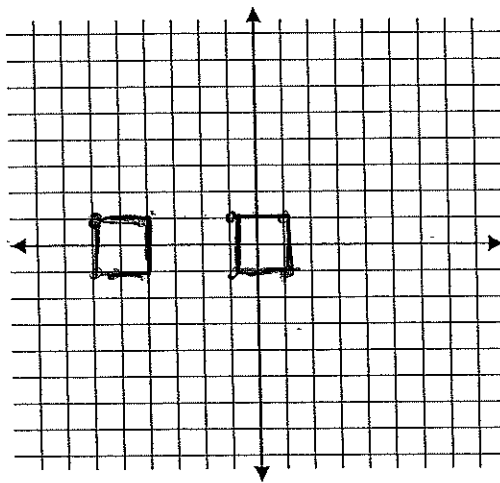
a)
 $P(5, 3)$ $Q(7, 4)$
 $R(7, 1)$

$$(x, y) \rightarrow (x, y - 5)$$



b)
 $A(-1, 1)$ $B(1, 1)$
 $C(1, -1)$ $D(-1, -1)$

$$(x, y) \rightarrow (x - 5, y)$$



5. Describe the translation from the pre-image to the image.

a) Using words (left, right, up, down, etc.).

RIGHT 8, DOWN 4

b) Using coordinate notation:

$$(x, y) \rightarrow (x + 8, y - 4)$$

Pre-image 8,

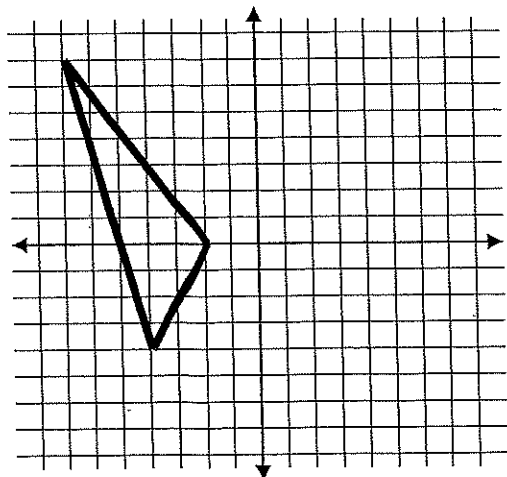
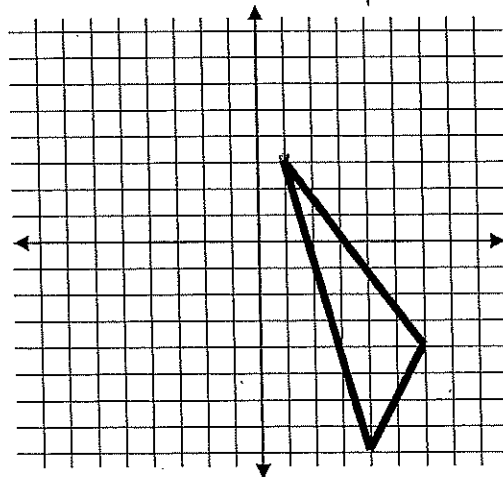


Image 1, 3



slide



move an item in any direction without rotating it

Translations Worksheets

Name: _____

Date: _____

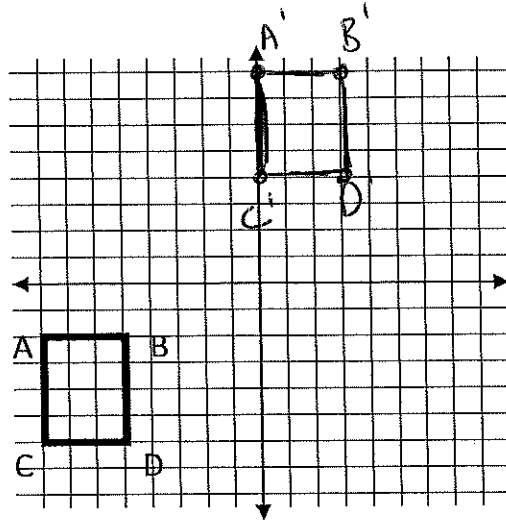
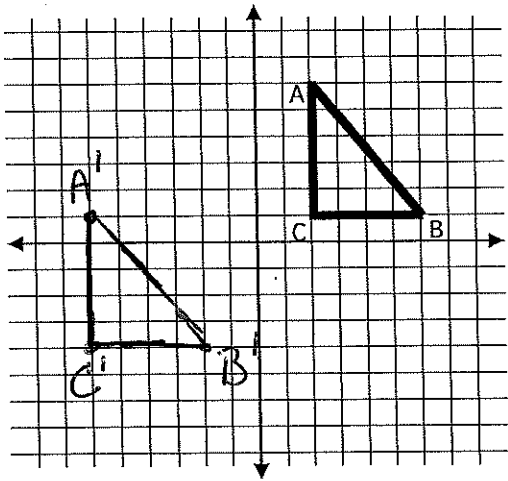
Period: _____

Sketch the image of the pre-image after the given translation. Label each vertex. Label image vertex as A', B', C' etc.

1. Slide 8 left and 5 down.

2. A(-8, -2); B(-5, -2); C(-8, -6); D(-5, -6)

$$(x, y) \rightarrow (x + 8, y + 10)$$



3. Graph and label the polygon determined by the coordinates below, then graph and label the image created by the transformation:

a)

P(4, 8) Q(2, 6)

R(2, 3) S(4, 5)

$$(x, y) \rightarrow (x + 4, y - 5)$$

b)

A(0, 0) B(-6, 0)

C(-6, 3)

$$(x, y) \rightarrow (x + 6, y + 3)$$

